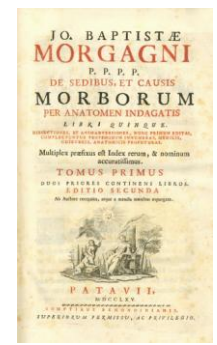
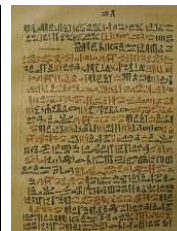
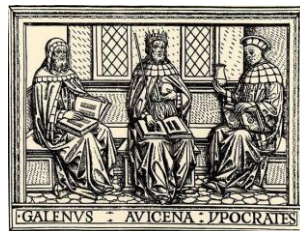


SIP YOUNG SCIENTISTS

navigating the road to a successful
career in pathology research

24th - 25th
OCTOBER
2011

AULA GIORGIO PRODI
COMPLESSO DI SAN
GIOVANNI IN MONTE
BOLOGNA



Organizer: Prof. Anna Gasperi-Campani (University of Bologna)

Co-Organizers: the SIP Board of Directors

Keynote Lectures by: Claudio Franceschi (University of Bologna), Elisabeth Schermer (European Commission), Nicola Vanacore (Istituto Superiore di Sanità, Roma).

Speakers: Paola Avena (Rende, Cosenza), Anna Laura Barbieri (Bologna), Elena Bellavista (Bologna), Silvia Bombelli (Milano Bicocca), Stefania Cannito (Torino), Claudia Capparelli (Rende, Cosenza), Elisa Cevenini (Bologna), Gaia Codolo (Padova), Maria Conte (Bologna), Maria Ilaria Demartis (Sassari), Maria Franzini (Pisa), Simona Gargiulo (Torino), Michela Guglielmotto (Torino), Carmela Guido (Rende, Cosenza), Stella Lukas Yari (Bologna), Matteo Lulli (Firenze), Fabio Marongiu (Cagliari), Rita Ostan (Bologna), Fabia Pancotti (Bologna), Arianna Palladini (Bologna), Chiara Pirazzini (Bologna), Elisa Porcellini (Bologna), Aurelia Santoro (Bologna), Daisy Sproviero (Rende, Cosenza and London), Stefania Stella (Catania).

TOPICS:

AGING

CANCER

CARDIOVASCULAR

LIVER

MOLECULAR BIOLOGY



DIPARTIMENTO DI PATOLOGIA
SPERIMENTALE
ALMA MATER STUDIORUM
UNIVERSITÀ DI BOLOGNA

