



ALMA MATER STUDIORUM
UNIVERSITÀ DI BOLOGNA
DIPARTIMENTO DI
SCIENZE BIOMEDICHE E NEUROMOTORIE

CHARACTERIZATION AND THERAPEUTIC TARGETING OF LACTATE SHUTTLES IN CANCER

Prof. Pierre Sonveaux

*University of Louvain (UCL) Medical School
Institute of Experimental and Clinical Research (IREC)*

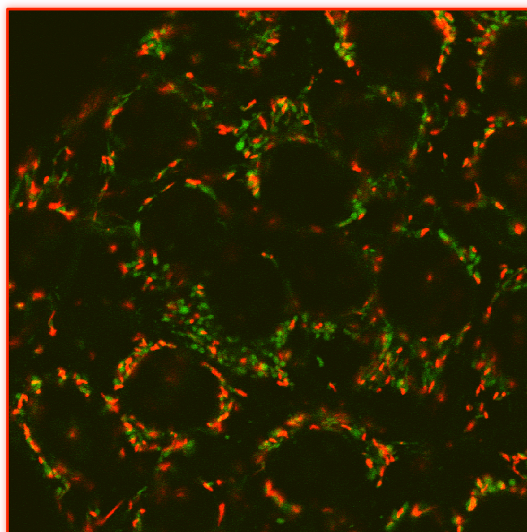


foto Dr. Hosogi Shigekuni

**4 NOVEMBRE 2014, ORE 11.30
AULA P VIA BELMELORO, 14**

La tua presenza è particolarmente gradita

Nicola Baldini

Sofia Avnet